

# student accommodation



urban  
sleep

- MYRTLE STREET APARTMENTS
- COPPERAS HOUSE
- HARDMAN HOUSE

# CONTENTS

- What we offer
- Our services
- Myrtle Street Apartments
- Hardman House
- Copperas House
- Shared Apartments
- Studios
- FAQs



## WHAT WE OFFER

Urban Sleep's trendy and modern, fully furnished accommodation buildings with stunning city centre views are located next door to the main university campuses and Liverpool's lively city centre. Multiple cafes, supermarkets, shops & restaurants are located on the ground floors of our properties or just a stone's throw from our accommodation.

You can choose from a wide selection of en-suite bedrooms in shared 2-5 bedroom apartments and a range of private studios. Laundrette and bike storage facilities are available on all sites.

A friendly & experienced management team are based on site and are ready to help with any enquiry seven days a week. Out of hours staff are available every night to ensure the safety and comfort of customers and to respond to emergencies & lock outs.

Our apartments are a perfect place to enjoy your student life in a safe, comfortable and friendly environment.

There are also dedicated email addresses & contact numbers for general queries, internet and maintenance as well as an online customer portal including a parcel notification system and a maintenance notification system.

Throughout the year we organise social events to help you meet other students. These include arrival socials and city walks, Halloween & Christmas parties.

Our prices include all utility bills, contents insurance and fast internet access to make the transition from home to rented accommodation as seamless and easy as possible.



## OUR SERVICES

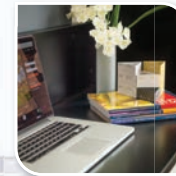
- Parcel collection
- On site reception
- Maintenance portal
- Accommodation events
- Friendly experienced staff
- In-house maintenance team
- Fast Wi-Fi & utility bills included
- Private cleaning services available

## SECURITY

- Key fob access
- CCTV throughout
- Out of hours staff
- 24/7 emergency helpline

## APARTMENT FEATURES

- Fully furnished
- Walk in showers
- Smart TV in every living room
- Open plan living room & kitchen
- All bedrooms include an ensuite
- Cleaning packs provided on arrival
- Full size fridge/freezers, induction hobs & ovens
- Microwaves, kettles, toasters provided
- Large beds with high quality mattresses



urban  
sleep

For more information please visit our website [www.urbansleep.co.uk](http://www.urbansleep.co.uk)



# MYRTLE STREET APARTMENTS

4 MYRTLE PARADE, LIVERPOOL, L7 7AA

Myrtle Street Apartments offers Platinum, Gold and Silver ensuite apartments in either 3 or 4 bedroom apartment layouts.

Myrtle Street Apartments is located in the historic Georgian Quarter, next to the University of Liverpool and Liverpool International College (KAPLAN), just a short walk to the LJMU Mount Pleasant campus.

With several supermarkets, takeaways and coffee shops on site, this is an ideal place for students who want to live close to the university and the city centre while enjoying all of the amenities on their doorstep in a diverse, welcoming, international community.

All of our studio types are available across the Myrtle Street Apartment accommodation building, giving you a choice of 4 different studio layouts. Our studios are luxurious, modern and stylish with either open plan living or part-separated kitchens giving you the best in student living.



Call us now on [0151 708 7000](tel:01517087000) option 1 to get more information!

urban  
sleep

# HARDMAN HOUSE

1 SOUTH HUNTER STREET, LIVERPOOL L1 9JG

Hardman House is situated in an exciting city centre location ideal for University of Liverpool and LJMU Mount Pleasant campus students.

Offering Platinum, Gold and Silver ensuite bedrooms in either 2 or 4 bed apartment layouts, with a variety of Studios that include our Diamond, Platinum, Gold and Silver layouts. Hardman House is surrounded by some of Liverpool's best restaurants, bars, cafes and supermarkets, this accommodation is a fantastic choice for those wanting to live in new, modern apartments with amazing views & facilities in a vibrant city centre setting.

To book a viewing for our apartments, please contact our friendly reception team on 0151 708 7000 option 1 or via [info@urbansleep.co.uk](mailto:info@urbansleep.co.uk)

urban  
sleep

For more information please visit our website [www.urbansleep.co.uk](http://www.urbansleep.co.uk)



# COPPERAS HOUSE

35 COPPERAS HILL, LIVERPOOL, L3 5AL

Copperas House is a modern student accommodation offering a variety of apartments from individual studios and 2 bedroom apartments to the larger 3, 4 and 5 bedroom apartments. With excellent city views and new high quality furnishings

With 24/7 staff, reception services, fast internet, all-inclusive billing, secure access and our student support team, you don't have to worry about losing your keys, missing an online lecture, or sorting out bills with your flatmates. We will take care of everything so that you can enjoy your student life experience.

At Copperas House you will be situated in an excellent location close to universities, Liverpool City Centre, supermarkets and transport links. All bedrooms feature large beds, walk-in showers, big wardrobes and the kitchens are fitted with full-size induction hobs, ovens, microwaves, kettles, toasters and large fridge freezers.



Call us now on **0151 708 7000** option 1 to get more information!

urban  
sleep

# SHARED APARTMENTS



## PLATINUM ENSUITE BEDROOMS

are our best rooms that stand out due to the size or location/view of the room or apartment.

## GOLD ENSUITE BEDROOMS

are spacious bedrooms with large windows and great views.

## SILVER ENSUITE BEDROOMS

are large bedrooms with good size windows looking into the courtyard areas.



For more information please visit our website [www.urbansleep.co.uk](http://www.urbansleep.co.uk)





## STUDIOS

### DIAMOND STUDIOS

are our most spacious studios with the private kitchen completely separated from the rest of the apartment and a spacious lounge area with a comfortable sofa and extra storage space.

### PLATINUM STUDIOS

provide a semi-separated kitchen and even more space for the tenants including a lounge area with a comfortable sofa and extra storage space.

### GOLD & SILVER STUDIOS

are open plan studios with large beds, great views and private bathroom and kitchen facilities.

Pictures for illustration purposes

Call us now on [0151 708 7000](tel:01517087000) option 1 to get more information!

urban  
sleep

# FAQs

## HOW CAN I BOOK A ROOM?

To book a room with us just visit [www.urbansleep.co.uk](http://www.urbansleep.co.uk) and choose the "bookings" options in the menu. This will take you to our login portal, you will need to either register to create a new account or sign-in.

Once you have signed in you will be able to select your room type and tell us about your preferences on the application.

We will then send you a Tenancy Offer with the best available apartment to meet your requirements.

## CAN I SEE THE ROOM BEFORE I BOOK IT?

If you would like to learn more about our rooms, please visit [www.urbansleep.co.uk](http://www.urbansleep.co.uk) and you can see videos and virtual tours of our rooms.

If you would like to visit our property for a viewing, please book this in advance with our team by calling 0151 708 7000 or e-mailing [info@urbansleep.co.uk](mailto:info@urbansleep.co.uk)

\*all cancellations must be received in writing within 2 weeks of accepting your tenancy

## DO I NEED TO PAY A DEPOSIT?

Yes.

Deposits are required to confirm your booking.



For more information please visit our website [www.urbansleep.co.uk](http://www.urbansleep.co.uk)

urban  
sleep

# NOTES

# HOW TO FIND US



4 Myrtle Parade, Liverpool L7 7AA | 0151 708 7000 | [www.urbansleep.co.uk](http://www.urbansleep.co.uk)

